

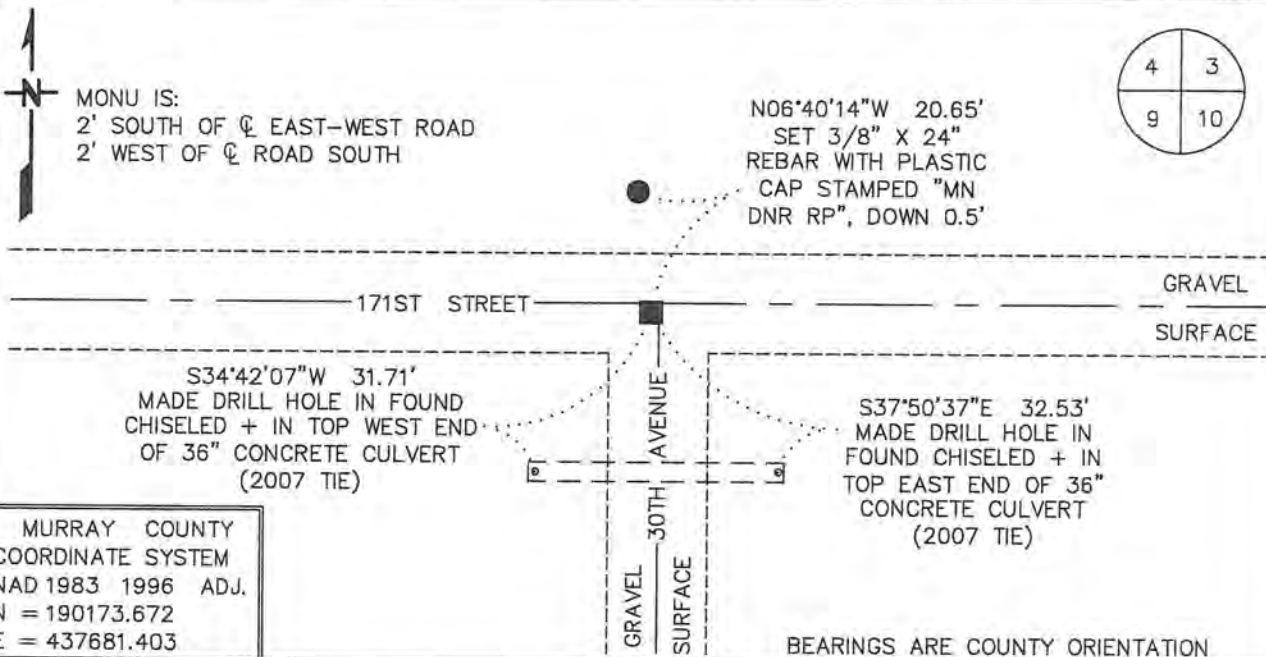
CERTIFICATE OF LOCATION OF GOVERNMENT CORNER

NORTHEAST Corner of Section 9, Township 107 N, Range 43 W

5TH Principal Meridian, State of Minnesota, County of MURRAY

At the corner location shown on the sketch:

- On 11/1/16 found a 2" DIAMETER BY 14" LONG CHARRED WOOD STAKE,
DATE DOWN 2.0'
- left monument as found, lowered monument, removed monument (explain)
- On 11/1/16 Placed a 3/4" X 24" REBAR WITH PLASTIC CAP STAMPED
DATE "MN DNR LS 17003", DOWN 0.5', IN PLACE OF CHARRED WOOD STAKE



Statement of evidence for this corner location is on back of this page.

FEBRUARY 2017
 WMA00754

I hereby certify that this plan, specification, or report was prepared by me or under my direct supervision and that I am a duly Licensed Land Surveyor under the laws of the State of Minnesota.

SIGNATURE Bruce W. Shepherd DATE 10/9/17 License Number 17003
 BRUCE W. SHEPHERD

The DNR Division of Lands and Minerals contacted the following for survey information:

Website - mngeo.state.mn.us for GLO plat and field notes

Website - murray-countymn.com for section and quarter section corner information

Murray County Recorder's Office

Bueltel-Moseng Land Surveying, Inc. of Marshall

Westwood Multi-Disciplined Surveying & Engineering of Eden Prairie

- 1866 U.S. General Land Office notes, obtained from mngeo.state.mn.us, show the corner marked with a post, in a mound.
- 1908 Plat Books for Cameron Township, obtained from the County Recorder's Office, show
1926 roads east-west-north-south in the area of the corner.
- 2006 March 8, A Certificate of Survey in Section 10, by Daniel Bueltel, LS No 43844, obtained from Bueltel-Moseng Land Surveying Inc., shows that a 5/8 inch iron pipe with seal number 43844 was found at the corner. The corner is shown:
2643.04 feet from the north quarter corner of Section 10
2656.63 feet from the west quarter corner of Section 10
- 2007 June 27, A Certificate of Location of Government Corner, obtained from the County Recorder's Office, which is also on Website murray-countymn.com, signed by Christopher Moehrl, PE & LS No 40853, shows that a 1/2 inch capped iron pipe was found down 0.3 of a foot at the corner. The following ties are shown to the corner:
at the intersection of the center line of roads south, east and west
"X" in east side of culvert top, southeast, 31.10 feet
"X" in west side of culvert top, southwest, 33.02 feet
set 3/8 inch rebar, down 0.5 of a foot, northwest, 23.55 feet
- 2016 November 1, the DNR Division of Lands and Minerals found an iron pipe with plastic cap stamped 11943 at the corner. Then a hole was dug with a backhoe the center being the found iron pipe and a 2 inch diameter by 14 inch long pointed charred wood stake was found standing in an upright position down 2 feet. The charred wood stake was found to be:
2.33 feet west of the found iron pipe with plastic cap stamped 11943
2 feet west of the center line of a road south
2 feet south of the center line of an east-west road

Northeast Corner of Section 9, Township 107 North, Range 43 West
Page 2 of 2

Analysis of the above information led the DNR Division of Lands and Minerals to conclude that the found 2 inch diameter by 14 inch long pointed charred wood stake marks the location of the corner.

The found charred wood stake was discarded and a $\frac{3}{4}$ inch by 24 inch rebar with a plastic cap stamped "MN DNR LS 17003" was set in its place as shown on the sketch of reference ties. Also, discarded the found iron pipe with plastic cap stamped 11943.

Searched for and found two of the 2007 record ties as shown on the sketch of reference ties.